

**CompleSal<sup>®</sup>**







# CMPLETES

your successful crop management

Foliar Nutrition Strategies  
**Cucurbits**

**K**  
kams.ca  
**KAM'S**  
GROWERS SUPPLY INC.

orders@kams.ca  
1.877.821.1684

Application	Product	L/ha
<p>2–4 true leaves</p> 	<p><b>Macro M</b></p> <p>Delivers balanced N-P-K nutrition and supplies necessary micronutrients for plant establishment and overall health</p>	<p><b>3.5</b></p>
<p>First fruit set</p> 	<p><b>Microplant Mg + Complestal Calcium</b></p> <p>Complete prevention of micronutrient deficiencies and early potassium delivery</p> <p>+</p> <p>Higher brix, firmer fruit, better shelf life and prevention of blossom end rot</p>	<p><b>2.34</b></p> <p>+</p> <p><b>3.5</b></p>
<p>Fruit enlargement</p> 	<p><b>K25 + Complestal Calcium</b></p> <p>Supplement sugar production and complete prevention of micronutrient and magnesium deficiencies</p> <p>+</p> <p>Higher brix, firmer fruit, better shelf life and prevention of blossom end rot</p>	<p><b>4.68</b></p> <p>+</p> <p><b>3.5</b></p>
<p>Maturation onset</p> 	<p><b>K25</b></p> <p>Supplement sugar production and complete prevention of micronutrient and magnesium deficiencies</p>	<p><b>4.68</b></p>

Always follow label requirements for rates, timing of application, adjuvant requirements and mixing order of all tank mix combinations. Listed spray programs are recommendations only. Consult your local extension specialist or certified crop advisor about your specific foliar needs.

# Application Options for Cucurbits



## Pass 1: 2-4 true leaves

Product	Rate/ha	N	P <sub>2</sub> O <sub>5</sub>	K <sub>2</sub> O	Ca	Mg	S	B	Cu	Fe	Mn	Mo	Zn
Macro M	3.5 L	10.0%	10.0%	10.0%			1.32%	0.02%	0.05%	0.10%	2.0%	0.001%	0.05%

## Pass 2: First fruit set

Microplant Mg	2.34 L	5.0%	5.0%	10.0%	5.2%		1.80%	0.30%	0.50%	1.00%	1.50%	0.01%	1.00%
Calcium	3.5 L	10.0%			10.7%	1.2%		0.05%	0.04%	0.05%	0.10%	0.001%	0.02%

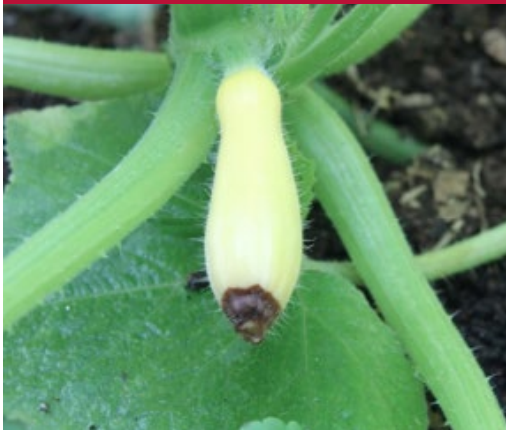
## Pass 3 : Fruit enlargement

K25	4.68 L	3.0%		25.5%		1.2%	4.0%	0.02%	0.05%	0.10%	0.05%	0.001%	0.05%
Calcium	3.5 L	10.0%			10.7%	1.2%		0.05%	0.04%	0.05%	0.10%	0.001%	0.02%

## Pass 4: Maturation onset

K25	4.68 L	3.0%		25.5%		1.2%	4.0%	0.02%	0.05%	0.10%	0.05%	0.001%	0.05%
-----	--------	------	--	-------	--	------	------	-------	-------	-------	-------	--------	-------

## Common Nutrient Deficiencies



Blossom End Rot (Calcium Deficiency)



Magnesium Deficiency



Manganese Deficiency



## Benefits of Foliar Fertilization

Foliar nutrition is the ultimate tool for managing plant stress, delivering targeted nutrients during peak demand and efficiently addressing deficiencies in the plant at the right time.

- Improve plant health
- Direct delivery of nutrients
- Address nutrient deficiencies
- Offset poor soil uptake
- Deliver nutrients to specific areas of demand within the plant
- Offset poor nutrient distribution within the plant
- Promote root absorption
- Stimulate photosynthesis

### ANTI-EVAPORANTS

- ▶ **Benefit:** Long-lasting spray film



Droplets reach the leaf surface even under hot conditions and nutrients remain in a dissolved form.

### BUFFERING AGENTS

- ▶ **Benefit:** Improves stability of the spray solution and provides optimum nutrient availability when tank-mixing with many common crop protection products.

### MISCIBILITY

- ▶ **Benefit:** Application and handling efficiencies result from tank mixing Complestal formulations with many common crop protection products.

### STICKERS

- ▶ **Benefit:** Reduced loss due to rain



Stickers increase nutrient adhesion on the leaf surface.

### SURFACTANTS

- ▶ **Benefit:** Maximized uptake area



Droplets spread evenly on the leaf. The covered surface is maximized.

### HUMECTANTS

- ▶ **Benefit:** More efficient foliar fertilization



Ambient water from the air is attracted and re-moisturizes the leaf surface.

### STRONG CHELATING AGENTS

- ▶ **Benefit:** Ensures the water solubility required for plant uptake and utilization.

